



SOMERLEY
—
ESTATE

Weddings at Somerley House

Somerley House

INTRODUCTION

A wedding at Somerley combines luxury and opulence with comfort and warmth. This exquisite Country House is the perfect place for a celebration – it's sumptuously elegant, with the welcoming embrace of a family home.

The ground floor of the Main House has a range of licensed ceremony rooms to choose from, each with its own distinct atmosphere. Everything is connected, so there's a natural and easy flow between spaces for you and your guests, and the chance to design your day exactly the way you want it.

Somerley House stands proud with breath-taking views over the rolling green of the Estate's parkland and centuries-old woodland.



ABOUT SOMERLEY

Somerley is an exquisite English Country House available for dry hire, located in a beautiful rural setting.

Designed by Samuel Wyatt in 1750, Somerley has been in the Normanton family for six generations since its purchase by The 2nd Earl in 1825. The House and its Gardens sit high up, overlooking hundreds of acres of parkland. Winding its way through this beautiful parkland is the well-known River Avon which stretches the full length of the 7,000-acre Estate.

Somerley provides an intimate and elegant location with the welcoming embrace of a family home. Styled for hospitality, the Main House offers sumptuous rooms for a glamorous and atmospheric experience.

Catering is taken care of by one of our award-winning catering partners – Bread & Flowers, Ginger Catering Company, Molecular Magic or Kalm Kitchen Caterers. We have an extensive wine list and all other beverages are taken care of by our in-house bar team.

The House may be hired complete with nine spacious and individually styled bedrooms for guests or family groups and can comfortably sleep 18 adults and seven children, in addition there is plenty of complimentary parking on site.

We also have an additional accommodation available within the Estate; our Farmhouse that sleeps 8 guests, together with a boutique Salmon Hut that sleeps 2, should extra bedrooms be required.

LOCATION

Just two hours from London, 20 minutes from Bournemouth, 25 minutes from Salisbury and 25 minutes from Southampton.



Ceremony



SOMERLEY IS YOURS TO MAKE YOUR OWN

Somerley House is licensed to hold Civil Ceremonies, we have 6 licenced areas that you are able to transform to be your very own Ceremony space, whether it be an intimate setting in our East Library, or grandeur in our Picture Gallery. Our licenced rooms and capacities are below:

The Garden Colonnade (outdoor ceremony space): 140

Picture Gallery: 160

Drawing Room: 100

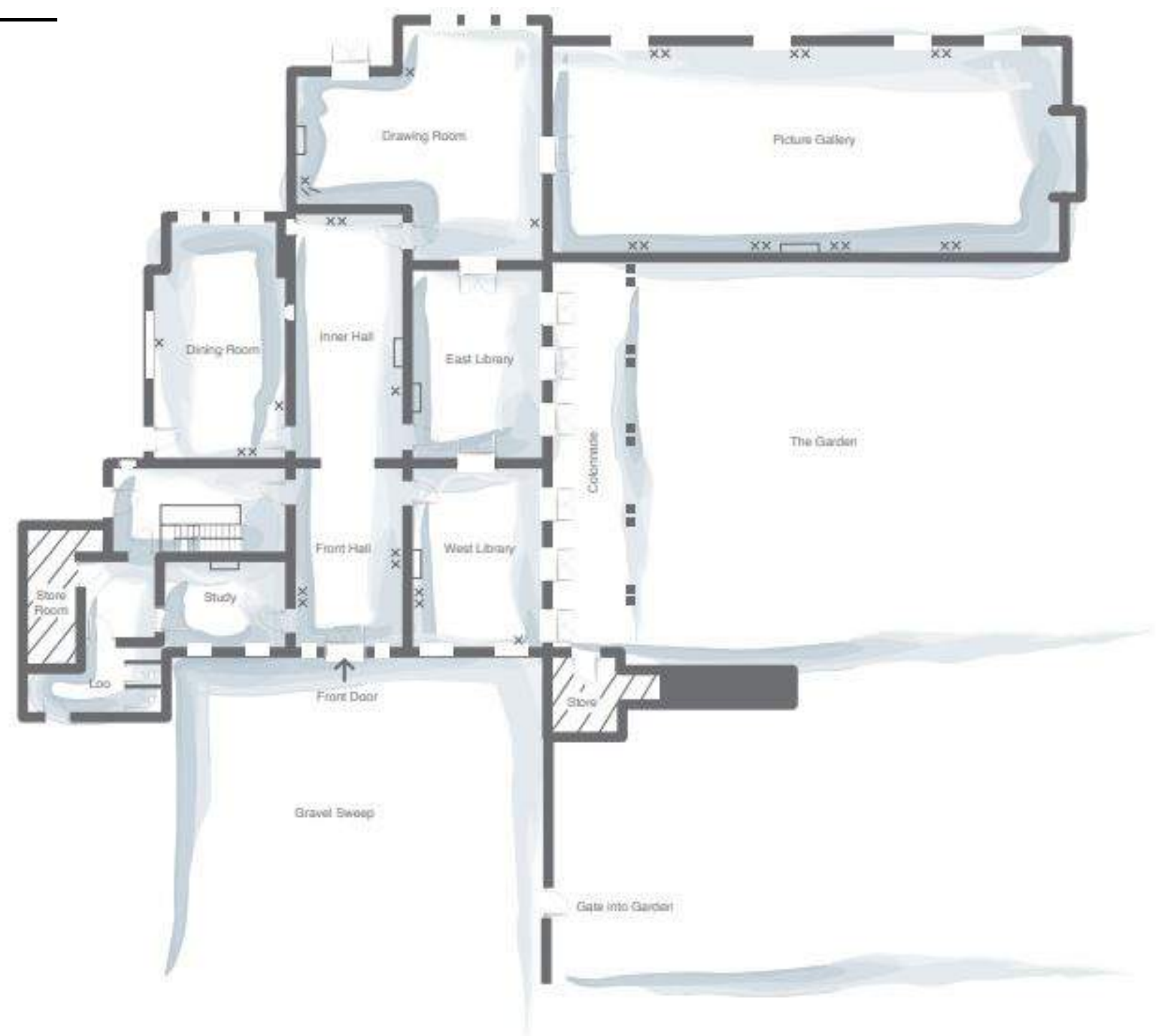
Hall: 80

Dining Room: 80

East Library: 40

In addition we have 4 local churches each within close proximity to Somerley, please see our supplier document for contact details for each.

Ceremony Locations



Great Outdoors



THE COLONNADE & SOMERLEY HOUSE GARDEN

Bridge the gap between the splendour of indoors and the rolling green of the Somerley Estate with the Colonnade and East Terrace.

Serve your guests chilled and bubbly refreshments in our formal gardens and start your celebrations against a truly majestic backdrop.





Marquee

THE COLONNADE & SOMERLEY HOUSE GARDEN

For larger parties of over 140 guests, our sweeping lawn adjoining Somerley House offers the perfect location for a your marquee. Relax on the lawns for drinks and garden games, then head in to dine in your own tented world, created just for you.

For an extra touch of magic, your marquee can be built to incorporate Somerley's famous Triton Fountain inside.

For bespoke garden marquee weddings, get in touch with our events team, email us at weddings@somerley.com, and we can tailor a package especially for your wedding day.







Wedding Breakfast

DINNER & SPEECHES

Celebrate and dine with up to 140 of your closest friends and family in our Picture Gallery.

This room is the jewel in Somerley's crown, a stunning 90ft gallery with views across the parkland, allowing sun to flood through the sky lights and windows. Alternatively, this stunning room can be transformed to create a romantic and intimate setting, with the glow of candlelight reflected in the antique mirrors.

Catering is taken care of with one of our carefully chosen caterers, see our supplier list, who can tailor your culinary requests to become a reality.

Seated Capacity:

140 people, 14 round 6ft tables.

80-100 people for banquet style seating.



Wedding Reception

DANCING

Dance the night away in our Drawing Room, one of our most versatile spaces that doubles up both as our ceremony space but also our dance floor space.

A free flowing view from the bar to the dance floor they'll be no reason not to get your dancing shoes on. As part of your hire with Somerley we supply a parquet dance floor, however, alternatives can be sourced. Late night extensions to 1am are available upon request.





Rest

13

OUR BEDROOMS

A total of 18 adults (based on two guests per room with additional z-beds available for children) can be accommodated in the Main House.

Each of our nine bedrooms and seven bathrooms enjoy magnificent views over the surrounding parkland.

Each room has its own personality and there's a sense of peace and quiet comfort in each one. We never compromise on modern creature comforts. This is where luxury and history go hand in hand.



14

Rest Cont...

THE FARMHOUSE

Also available for hire alongside the Main House is our Grade II listed cottage.

Nestled in the grounds of Somerley Estate, The Farmhouse sleeps up to 8 adults and makes for a perfectly private hideaway, extra space for additional guests wishing to make a weekend of their stay with us, a bridal preparation space or groomsman's bolthole.

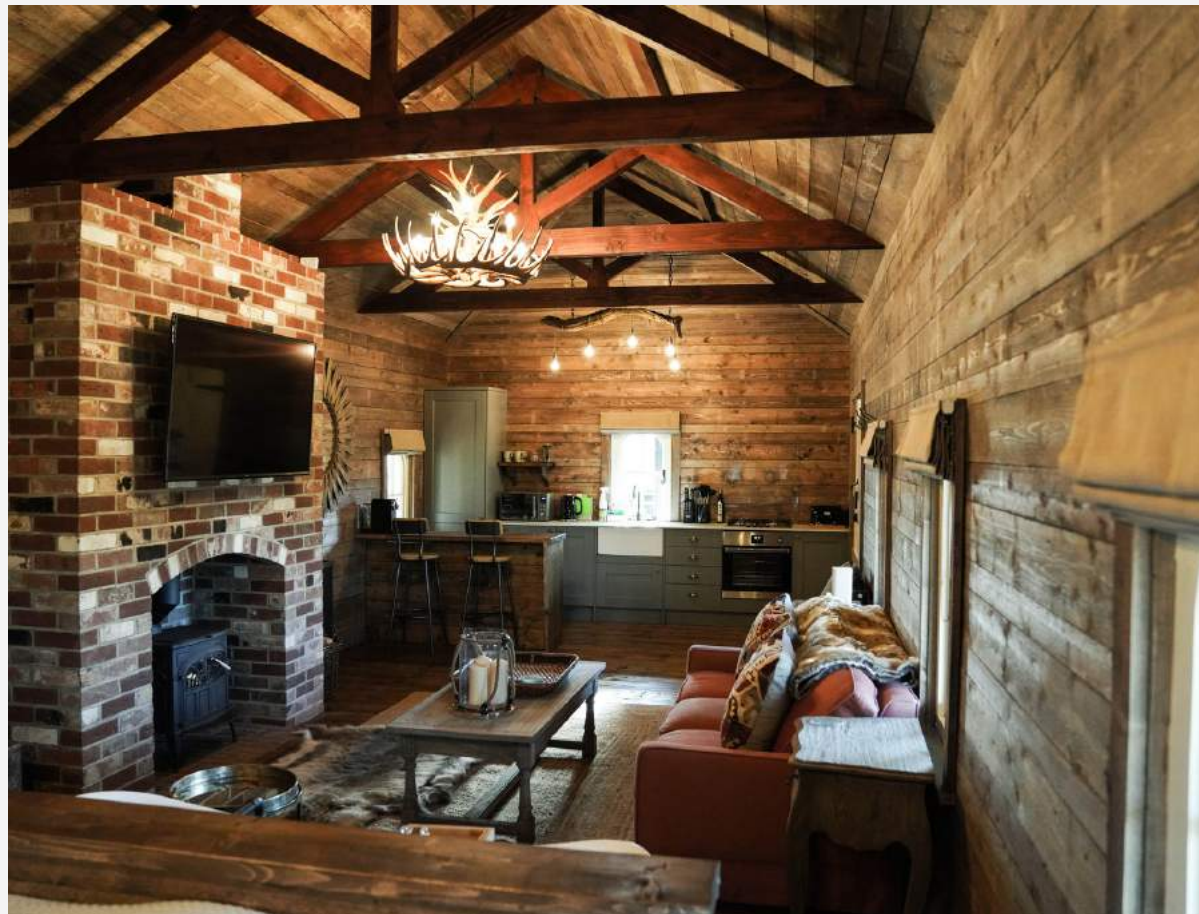




15

Rest Cont...

THE OLD SALMON HUT



Also available for hire alongside the Main House and our Farmhouse is our recently converted Old Salmon Hut.

Hidden away next to the banks of the River Avon, The Old Salmon Hut is a great honeymoon suite. Sleeping two in a pure luxury with a cosy log burner and a roll top bath also.



Hire & Booking

17

INCLUDED IN ALL HOUSE HIRE BOOKINGS

Up to 14 round tables (5'6" diameter, seating 8 guests or 6' diameter seating 10 guests)

Up to 150 gold banqueting chairs

3 Black highchairs

8 Trestle tables (6' x 3')

1 Gold easel (suitable for A1 or A2 Seating Plans)

1 Round antique cake table

1 Silver cake knife

Parquet dance floor

2 Black coat rails & 200 black felt hangers

Wheelchair ramp

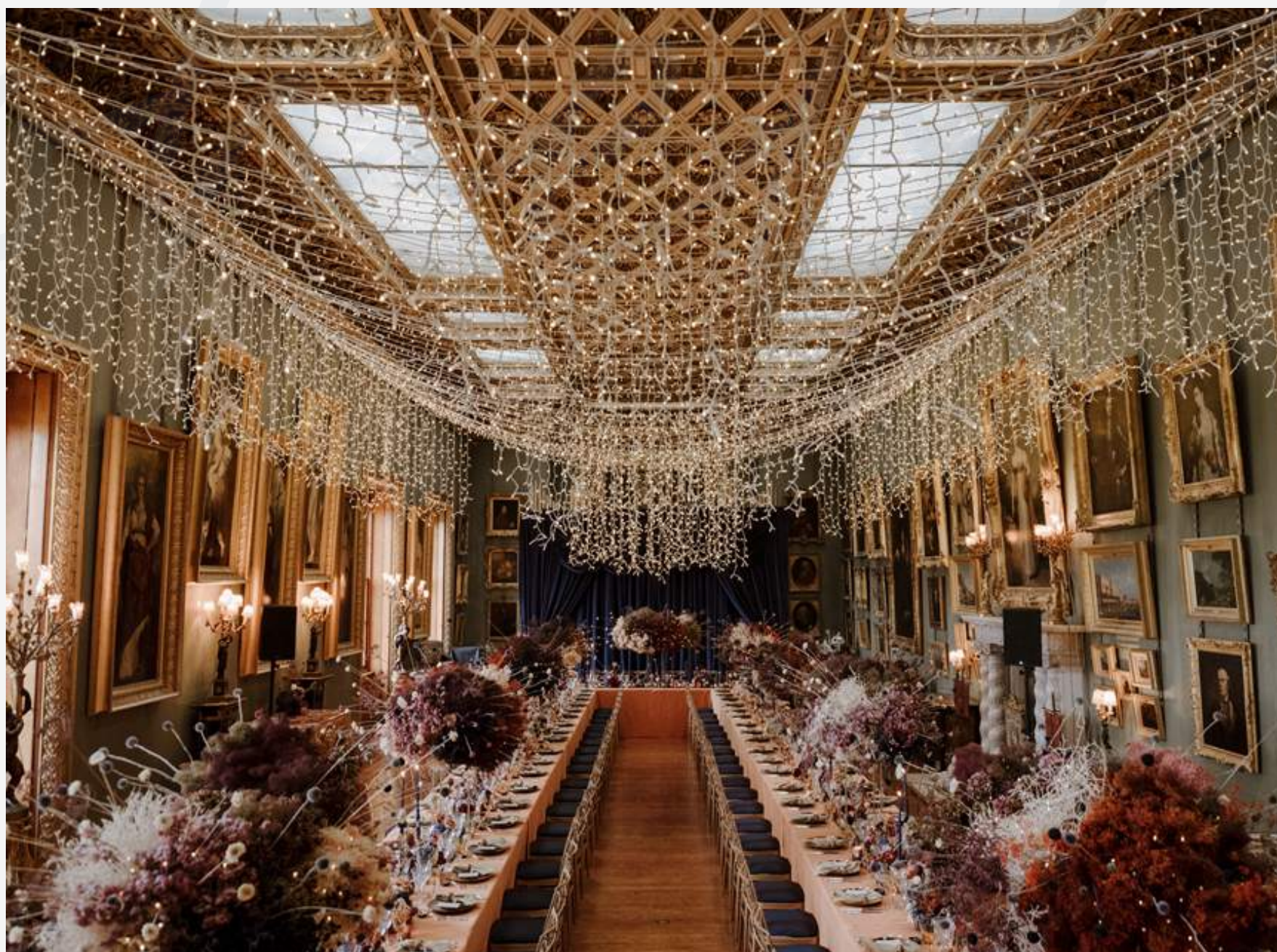
2 speaker PA system

1 Wireless/Handheld microphone

Please note:

Somerley does not have disabled toilets or lift access to bedrooms.

If hiring a marquee, your furniture, PA system and toilet facilities are to be arranged directly with one of our marquee partners.



WWW.SOMERLEY.COM | WEDDINGS@SOMERLEY.COM | 01425 473 621



SOMERLEY
ESTATE

